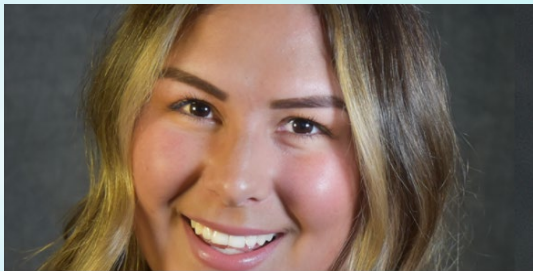


Social Worker Spotlight!

November 2021

Stephanie Barron



Stephanie Barron has been a social worker since 2013, working on the cardiac surgery units at the Asper Clinical Research Institute at St. Boniface Hospital.

In her role, Stephanie completes psychosocial assessments, assists with discharge planning, coordinates and provides information to patients about community resources, and provides support to patients and families, acting as their advocate. She is also one of the social workers for the heart transplant team, helping complete extensive psychosocial assessments on every person under assessment for a heart transplant.

Stephanie is also part of a team working on a pilot project between the Cardiac Sciences program and the Addictions Foundation of Manitoba (AFM) aimed at providing increased resources and supports for patients who have substance abuse issues while in the hospital.

She enjoys being a part of an interdisciplinary team, which she has found helpful during these challenging times. "It has served as a reminder that we are all in this together," she says, adding that she enjoys helping to brighten the day of co-workers and patients in any way she can.

*Thank you, **Stephanie Barron** for your essential contributions!*